



**France Afloat**



For Enquiries and Booking, contact

**French Waterways**

UK +44 7590 287 178

FR +33 609 74 00 64

[www.french-waterways.com](http://www.french-waterways.com)

[info@french-waterways.com](mailto:info@french-waterways.com)

FRANCE AFLOAT  
20 YEARS  
CELEBRATING

Quality  
boating  
holidays

from the  
French Canal  
Specialists



**CLICK TO ENQUIRE**

LINSSEN



YACHTS



# France Afloat

is *unique* in being both a family business, and actually being based in France. We have all lived and worked on the inland waterways of France for many years and can offer the friendly, personal and informed advice that you need to choose the perfect boating holiday. No other company offers such a wealth of knowledge on the boats, the regions, sites and scenery and all this advice is only a phone call away.

## The French Canal Specialists

At France Afloat we are confident that our knowledge and service are second to none. Indeed our expertise extends beyond the selection here, so if you cannot find what you are looking for or have a specific request, do not hesitate to contact Steve, Zoë, Mike or Lesley for free well informed advice and unbeatable service.



**Rediscover the real France cruising along her inland sleepy villages and country restaurants float by as**

...the civilised face  
of adventure!



waterways. Stunning scenery,  
your voyage of discovery unfolds



## Cruising areas

A France Afloat holiday offers an opportunity to cruise through the unrivalled and varied French scenery and to indulge your senses in the vineyards, restaurants and markets. The simple pleasures of locking through and cycling along the traffic free towpaths punctuate your day, while the abundant wildlife enliven the ever-changing scenery with their energy and vitality. No previous experience is necessary as a full practical demonstration will be given prior to departure. However a certain level of agility is required when moving on and off the boat and helping with the locks.



## CONTENTS

|                |    |
|----------------|----|
| Regions        | 3  |
| Burgundy       | 4  |
| Midi           | 7  |
| Linssen        | 9  |
| Classic        | 18 |
| Modern         | 24 |
| Budget         | 25 |
| Information    | 27 |
| Boats for Sale | 28 |



**Burgundy** is one of the best loved and most beautiful regions of France, offering some of the most attractive cruising to be found anywhere in the world. Add to this the region's reputation for fine wines, such as Chablis, and gastronomy and you have the perfect ingredients for a memorable holiday. This region with its unspoilt scenery, diverse wildlife and cultural heritage, make it our personal favourite.

## Regional Highlights and Gastronomy:

- ▶ Stunning natural scenery
- ▶ Historic towns and villages
- ▶ Abundant wildlife, Otters, Kingfishers, Herons
- ▶ Chablis, St Bris and Irancy wines
- ▶ Boeuf Bourguignon, Escargots, Epoisses Cheese

### Vermenton (Nivernais)

The English owned base at Vermenton is ideally placed for you to enjoy the original charm and rustic grace of the Canal du Nivernais. The Nivernais is often described as the most beautiful canal in France, a reputation that is well deserved. The fine wines and excellent restaurants also merit a similar reputation and the regional cuisine is not to be missed. Vermenton being at the northern end of the canal offers excellent cruising and access via Auxerre to the river Yonne and Canal du Bourgogne.







## Cruising suggestions with approx cruising times

### Vermenton

#### One-way

1 week Vermenton to  
Tonnerre via Joigny, 30  
hours. (Burgundy and  
Nivernais canals and river  
Yonne)

#### Return cruises

**1 week** Clamecy via Chatel  
Censoir & return, 20 Hours.  
+10 Hours if you add the  
return leg to Auxerre, highly  
recommended (Nivernais  
canal)

**2 Weeks** Châtillon en Bazois  
via Clamecy & return, 55  
hours. (Nivernais canal) or  
Tonnerre via Auxerre &  
return, 50 hours. (Nivernais  
& Burgundy canals & river  
Yonne)

#### Circular cruise

**3 Weeks** Circular via  
Auxerre, Joigny, Moret sur  
Loing, Briare, Decize and  
Clamecy, 96 hours. (Nivernais  
canal, rivers Yonne, Seine,  
Briare and Loire canals)





## Tonnerre (Burgundy)



Tonnerre is a bustling town with many shops and restaurants, and is the gateway to the green and undulating countryside that characterise the Canal du Bourgogne. Skirting the Chablis vineyards, the Canal de Bourgogne meanders through green pastures and is studded with many historic towns and Chateaux. Opportunities abound to step ashore and to sample the excellent local food and wines..



## Cruising suggestions with approx cruising times

### Tonnerre

#### One-way

**1 week** Tonnerre to Vermenton via Joigny, 30 hours. (Burgundy & Nivernais Canals and river Yonne)

#### Return Cruises

**1 week** Monbard, via Tanlay & return, 30 hours. (Burgundy Canal) or Sens via Joigny & return, 25 hours. (Burgundy Canal and river Yonne)

**2 weeks** Moret sur Loing via Sens- & return, 55 hours. (Burgundy Canal & rivers Yonne, Seine & Loing)



The Canal du Midi, the most famous canal in the world, together with the medieval city of Carcassonne are now both UNESCO world heritage sites - a tribute to their historical and natural beauty. Linking the Atlantic and the Mediterranean, the canal runs through beautiful hills in the shadow of the Pyrenees. It then passes

tantalizingly close to the Mediterranean in the Camargue, and is surrounded by the greatest density of vineyards anywhere in the world.

#### Regional Highlights and Gastronomy:

- ▶ Tree lined canals and Mediterranean coast
- ▶ Cathar Country and Bastides
- ▶ Corbières, Minervois & Buzet wines
- ▶ Bouillabaisse, Cassoulet, Magret de Canard

# MIDI







Cruising suggestions with approx cruising times

#### Midi

##### One-way

**1 Week** Capestang to Bram via Carcassonne, 30 hours (Canal du Midi)

##### Return cruise

**1 week** Carcassonne, via Homps and return, 30 hours (Canal du Midi)

**2 weeks** Castelnaudary via Carcassonne and return, 54 hours (Canal du Midi)

### Capestang (Midi)



The famous Canal du Midi meanders along the foot of the black mountains in the shadow of the mighty plane trees. Along its course are charming small villages, canal side restaurants & of course the stunning fortress town of Carcassonne. Our base at Capestang is on the "Grand Bief" a 54km lock-free stretch of canal which follows the contours between Beziers and Le Somail.











## Linssen Boating Holidays

Linssen Yachts are builders of quality gentleman's motor cruisers. Their reputation for design & build have made their cruisers highly sought after, and has led to them being considered the "crème de la crème" of steel motor cruisers.

The Linssens are high specification boats and boast a host of modern features. All the boats have central heating, 220v circuits powered from the shore and/or invertors, bow thrusters etc., and come with quality bedding and towels. Their design includes features to ensure quiet and comfortable cruising, with sound proofing and engine installation of the highest quality. In addition, their unique hull design and bow thrusters ensure precise and simple handling.

Linssen's motto is "we take your pleasure seriously" and this applies equally to their boats and to Linssen Boating Holidays. Linssen luxury charter will appeal to those who enjoy the finer things in life.

**Relax and enjoy your holiday aboard one of our  
many Linssens**



- 1 Vermenton (Nivernais)
- 2 Tonnerre (Bourgogne)
- 3 Capestang (Midi)

### The flags indicate where each boat is available

The boat layouts, pictures and descriptions are for general guidance only. Some boats may have minor variations e.g. bed positions, appliance positions, and trim colours.





Perfect *for a couple*



**Linssen 29.9  
Sedan**

9.35m x 3.35m

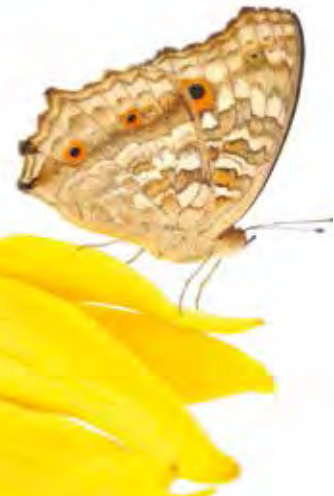
(Sleeps 4 extra  
comfort 2) 1 Double  
Cabin, 1 shower and  
toilet. Saloon/Galley  
with convertible  
dinette, large sun roof  
and interior helm.

Double doors to large  
aft cockpit with  
seating. 220v shore  
supply, inverter.

Bow Thruster



Time for a refreshing drink on deck  
watching the world go by





Surprisingly *spacious*



### Linssen 29.9 AC/ 30.9AC

9.35m x 3.35m  
(Sleeps 6 comfort 4  
extra comfort 2)  
2 Double cabins. 1  
shower and 2 toilets.  
Saloon/Galley with  
convertible dinette.  
Large aft deck with  
exterior helm, bimini  
cover, table and chairs.  
220v shore supply,  
invertor. Bow Thruster.

A 10% couple  
discount is available  
for two persons only





# Space and elegance



Vermenton (Nivernais)



Tonnerre (Bourgogne)

The flags indicate where each boat is available

The boat layouts, pictures and descriptions are for general guidance only. Some boats may have minor variations e.g. bed positions, appliance positions, and trim colours.



## Linssen 33.9 AC

10.35mx3.40m

(Sleeps 6 Comfort 4)

2 Double Cabins, 1

shower & 2 toilets.

Spacious saloon/

galley with

convertible dinette

and writing desk.

Large aft deck with

exterior helm, table

and chairs. 220v

shore supply, invertor

and bow thruster.

A 10% couple  
discount is available  
for two persons only.



Enjoy a spot of fishing  
with the family



## Comfort for 2 couples



### Linssen 34.9 AC

10.70m x 3.40m

(Sleeps 6 extra comfort for 4) 2 double cabins. 2 showers and 2 toilets. Large saloon/ Galley with convertible dinette and writing desk. Large teak aft deck with exterior helm, table and chairs. 220v shore supply and inverter, bow and stern thrusters.

A 10% couple discount is available for two persons only





# Tradition *and* modernity



3

## Linssen Classic Sturdy 32 AC

(Sleeps 6 Comfort 4  
extra comfort 2)  
2 Double cabins. 2  
showers and toilets.  
Saloon/Galley with  
convertible dinette.  
Large aft deck with  
exterior helm, bimini  
cover, table and chairs.  
220v shore supply,  
inverter. Bow Thruster.

A 10% couple  
discount is available  
for two persons only







# Comfort *par excellence* . . .

## Linssen 40.9AC

The Linssen 40.9AC which will be based at Auxerre on the Yonne is a brand new boat from the renowned boat builder Linssen Yachts. Linssen are famed the world over for the quality of their workmanship and the design of their magnificent craft.

This is not a charter specification boat but a boat built for a private owner to a high specification and for that reason we only charter this craft to boat lovers with some previous boating experience. This is to ensure that the quality and finish of the boat are maintained and that the boat remains as fresh and new as the day she was delivered.

Cruising from the medieval city of Auxerre you are restricted to the Rivers Yonne and Seine. But this is not a hardship as the scenery and towns along these rivers offer attractive cruising and interesting and varied visits.

The range of restaurants is extensive and diverse, from small auberges offering traditional fare to Michelin 3 star opulence. A one

week cruise to Sens and back makes a superb holiday but with more time both Moret sur Loing, loved by the impressionist painters and even Paris are within range.







### Linssen 40.9AC

12.85m x 4.30m

3 cabins, 2 showers and toilets, a spacious saloon/galley and a large aft deck with exterior seating and a table for alfresco dining. Full heating, air con in saloon, electric toilets, 220v shore supply & inverter, bow & stern thrusters, GPS and teak aft deck.



The Linssen 40.9AC, which will be based at Auxerre on the Yonne, is a brand new boat from the renowned boat builder Linssen Yachts.





# CLASSIC

The EuroClassic barge is unique to France Afloat and is designed for spacious and comfortable cruising. We have used our extensive knowledge of both the French inland waterways and the requirements of most discerning clients to design and fit out these barges to an excellent standard.

Their large and spacious saloons are the focal point for onboard entertaining and are finished in exotic woods and feature stereo radio/cd players. Open plan from the saloon, is the well appointed galley with microwave and two fridges on the larger models, allowing the preparation of both aperitifs and gourmet meals.

Cutlery, crockery and linen are of a higher standard and towels are provided. Their large aft decks come with table, chairs, parasol and second exterior steering position and are perfect for al-fresco eating.

To complete the comfort each boat has electric flush toilets, central heating and its own 220v supply, which runs the air conditioning, immersion heater and any domestic appliance you may wish to bring.

Being barges they are designed for slow and comfortable cruising, their stately progress and stability allows you to enjoy the passing scenery.





# Great *for couples or families*

1 Vermenton (Nivernais)

2 Tonnerre (Bourgogne)

3 Capestang (Midi)

**The flags indicate where each boat is available**

The boat layouts, pictures and descriptions are for general guidance only. Some boats may have minor variations e.g. bed positions, appliance positions, and trim colours..



1 2 3  
**EuroClassic 129**

12m x 3.25m

(Sleeps 5 comfort 4)

1 x double & 1 x twin/  
double both with  
ensuite shower and  
electric flush toilets;  
2 x steering position;  
generator and/or  
shore supply providing  
220v; saloon with air  
conditioning and  
internal steering,  
galley with microwave,  
central heating; sun  
deck with external  
steering position.



# Enjoy *a longer cruise*



## EuroClassic 135 Grand Luxe

The EuroClassic 135 Grand Luxe started life as a private owners boat and as such was built to a high specification for a retired navel officer. She is a very comfortable vessel & comes packed with many extras. The spacious saloon/galley is a feature of this boat and it provides a hub for after-cruising entertainment.

The well-equipped galley opens on to a comfortable seating area with air conditioning for extra comfort. Two large side doors lead to

wide side decks giving access to the ample aft deck with a second exterior steering position, table and chairs making this the ideal place to helm the boat. The cabins provide good accommodation with en-suite showers and toilets and there is the added bonus of a washing machine.

If you are looking for a boat for a longer cruise the 135 Grand Luxe is the ideal choice. She has a good size engine, separate 220v generator, air conditioning, radiators for central heating and electric flush toilets.

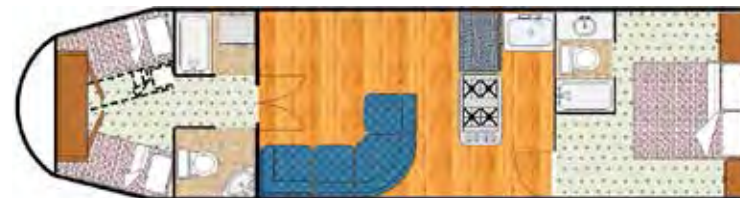


## EuroClassic 135

14m x 3.25m

(Sleeps 4 comfort 4)

1 x double cabin aft with en-suite shower and toilet, twin or double fwd with separate shower and toilet, large saloon/galley with air conditioning, aft deck with second exterior helm and seating. Generator and shore power providing 220v, central heating, electric flush toilets, saloon with interior helm and air conditioning., large galley with 2 fridges & microwave, aft sun deck with exterior helm table and chairs.





# Generous accommodation

- 1 Vermenton (Nivernais)
- 2 Tonnerre (Bourgogne)
- 3 Capestang (Midi)

## The flags indicate where each boat is available

The boat layouts, pictures and descriptions are for general guidance only. Some boats may have minor variations e.g. bed positions, appliance positions, and trim colours.



- 1 Vermenton (Nivernais)
- 2 Tonnerre (Bourgogne)
- 3 Capestang (Midi)

## EuroClassic 139

13.9m x 4.1m

(Sleeps 6 comfort 6)  
1 x double cabin, 2 x twin (some models offer 2 x double cabins) all with ensuite shower and electric flush toilets;  
2 x steering positions;  
generator and/or shore supply providing 220v; saloon with split galley with 2 fridges, microwave, air conditioning and internal steering; aft sun deck with second steering position.



Plenty of time for a cycle in the countryside





The most *spacious* four berth ever?



### EuroClassic 139 Grand Cru

13.9m x 4.1m

(Sleeps 4 comfort 4)

2 x double cabins both with ensuite shower and electric flush toilets; 2 x steering positions; generator and / or shore supply providing 220v; large saloon/ dining area with table and free standing chairs, fully equipped split galley and 2 fridges, microwave, air conditioning and internal steering position; aft sundeck with deck furniture and second steering position.





# Sleeps 8 in style and comfort

- 1 Vermenton (Nivernais)
- 2 Tonnerre (Bourgogne)
- 3 Capestang (Midi)

## The flags indicate where each boat is available

The boat layouts, pictures and descriptions are for general guidance only. Some boats may have minor variations e.g. bed positions, appliance positions, and trim colours.



- 1
- 2
- 3

## EuroClassic 149

14.9m x 4.14m

(Sleeps 8 comfort 8)

4 x twin/double cabins with ensuite shower and electric flush toilets; generator and/or shore supply providing 220v; saloon with split galley and microwave; air conditioning; internal steering; large rear sun deck with external steering.







The Broom 35 Coupé is a brand new boat for 2016 from the renowned luxury boat builder Broom Boats who have been building stylish and quality craft for over 100 years.

The 35 Coupé is a spacious boat and provides luxurious accommodation for a couple. The saloon is light and airy with a large sunroof and double doors to the aft cockpit which boasts comfortable seating that can be turned to face into or out of the boat. The large galley is open plan to the saloon. The forward cabin boasts a large bed and en-suite shower and toilet.

The Broom 35 Coupé is a great boat for cruising and her responsive helm and bow thruster make her ideal for beginners and experienced boaters alike.



## Broom 35 Coupé

10.69m x 3.76m

(Sleeps 4 comfort 2)

1 Double cabin, shower and toilet, well equipped galley, saloon with interior helm and large sunroof, double doors to large aft cockpit with adjustable exterior seating. Bow thruster, inverter & shore providing 220v, electric flush toilet, central heating.







## Viking 1000

8.6m x 3.6m

(Extra comfort for 2 only) 1 double, 1 twin cabin; or 2 x double; 2 x shower and toilet; 2 steering positions; saloon with galley, internal steering and convertible dinette; rear sun deck with external steering. 220v shore supply

**A 10% couple discount is available for two persons only**

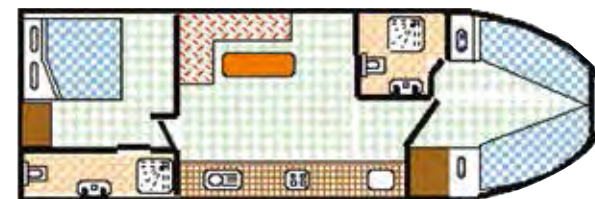


The "Budget" range of boats offer the chance to enjoy the French waterways without breaking the bank. The boats are a little older than

the other ranges but are well maintained.

All the boats have heating, 220v circuit, hot and cold water and at least one bathroom with a shower and toilet. The galleys are equipped

with cookers, fridges, utensils, cutlery, crockery and glassware. Linen is provided but not towels.







### Burgundy 1200

12m x 3.25m

(Sleeps 8 comfort 4) 1 double, 1 twin; or 2 x double 1 with extra single berth; 2 x shower and toilet; 2 x steering positions; 220v shore supply; galley; saloon with internal steering and convertible dinette plus possibility of using single "Z bed"; large rear sun deck with external steering.



#### The flags indicate where each boat is available

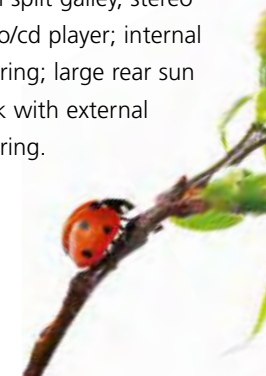
The boat layouts, pictures and descriptions are for general guidance only. Some boats may have minor variations e.g. bed positions, appliance positions, and trim colours.



### Burgundy 1500

14.9m x 4.14m

(Sleeps up to 11 comfort 8) 4 x twin cabins; 3 x shower and toilets; steering positions; generator and/or shore supply providing 220v; saloon with split galley, stereo radio/cd player; internal steering; large rear sun deck with external steering.





We hope the following facts will answer some of your questions and help you to have a more enjoyable holiday.



## Boat Introduction and handling

You do not need to have a licence to charter one of our boats. On your arrival you will be given full instruction on the operation of your boat. We will then take you on an introductory cruise and ensure that you can happily control the boat. During this cruise we will also provide detailed information on passing through a lock. Once this demonstration is complete you will be issued with a "permis de plaisance" which is valid for the duration of your cruise.

Please remember that a basic level of agility and physical ability is required on a boating holiday. It is not always easy to get on and off the boat and all the boats have steps. There is also a certain amount of rope work in the locks, and whilst the engine can be used, a little strength is required when using the ropes to control the boat.

## Locks & Lock Keepers

During your cruise you will have to "lock through"! But do not worry, this is a simple process which can also be a lot of fun. The locks in France are either automatic or operated by a lock keeper. You do not have to operate the locks yourself, but you do have to control your boat and use the ropes. (This will all be explained during the demonstration). Passing through a lock will take around 15mins, and this is a chance to chat to the lock keeper, meet other boat crews and to even purchase some local produce. The lock charges are covered in your "navigation forfait" and you do not have to pay the lock keepers. Lock opening hours are typically 09.00-12.00 & 13.00-19.00, although this does vary from region to region. The locks are usually shut on May 1st and July 14th.

## Navigation:

The canals pass through peaceful and picturesque countryside. This is reflected in the pace of the boats. In general, the maximum speed on the canal is 8km/h and you should

expect to average around 6km/h. A canal cruise is an opportunity to slow down, enjoy the countryside, and respect nature.

## Technical Assistance

During your cruise, should a problem arise, there is no need to worry. We provide a "call out" service and our trained mechanics will soon be there to solve any problems. This service is provided 7 days a week during working hours. We are also happy to answer any other questions you may have, book restaurants and organise taxis etc., indeed anything to make your holiday more enjoyable.

## Fuel, Gas and Water

When you arrive your boat will be full of fuel, gas and water. Unless you are cruising for three weeks or more it will not be necessary to top up with fuel, or to replace the gas bottles. Both of these items are included together with the lock fees in your navigation forfait.

Water however, will be required, the boats usually have autonomy of 2-3 days, but it is wise to top up the tank when the opportunity presents itself, or at least every other day. Water is usually available in towns and villages and in ports along the canal. It is often free in towns and villages, but you should expect to pay a few Euros to fill up in the ports.

## Electricity

The boats operate on 12v and have a battery bank to provide the power to the lights, fridges, pumps etc. These batteries are recharged by the engine whilst the boat is underway. The boats also have a 220v circuit and this is powered either by a shore supply cable or, on the luxury boats, by onboard generators/invertors. The 220v shore supply is available in ports and in some towns and villages, and, like the water, it is often free in towns and villages, but is charged for in ports. The 220v is not a necessity, but powers luxury

items such as air conditioning, and any personal items you may wish to bring (e.g. hair dryers).

## Children, Pets, Bikes etc

Children enjoy the canals, and there are many activities for them along the canal side. Swimming, play grounds, fishing, cycling etc. They can also enjoy locking through, and for the older children this is an opportunity to help and thereby improve their French. The boats are equipped with life jackets and these come in a range of sizes to suit all ages.

Pets are welcome on the boats, but you must ensure they have the appropriate documentation for travel to France. We can also help organise the vet's visit prior to your return home if necessary. We do not however have any pet's life jackets.

Bikes are the perfect accompaniment to a canal cruise. They provide some exercise off the boat and are ideal for visiting villages a little way from the canal, collecting the baguette and croissants, and for checking out the local restaurants.

## Navigation forfait

This is the only compulsory extra charge payable at the base, the deposits are refundable. This is based on the engine hours cruised, at the appropriate rate for each boat. The navigation forfait covers, fuel, gas, lock charges and other consumables. On those boats with a separate generator there is a lower hourly generator rate, just to cover the cost of the fuel used. Note: Most people cruise between 25 and 30 hours a week.

## Start and Finishing Times

Most bases offer Friday, Saturday and Monday start days. Pick up time is 15.00 and return is 09.00 on the final day.

## Parking

All bases offer secure parking for cars plus a limited amount of garaged parking which is best to reserve in advance







**CLICK TO ENQUIRE**



### Boat Sales

France Afloat is the French Agent for Linssen and also sells a range of new and secondhand craft. We can use our expertise to find you the boat of your dreams and can accommodate all budgets. Linssen Yachts are known for the quality of their manufacture from start to finish. Their design, materials and build are all first class and this leads to a finished boat that is head and shoulders above the competition. Everything about a Linssen is excellent, the finish, the handling, the use of space, mechanical detail and comfort. Quality does come at a price, but a Linssen is most definitely an investment. With so much inbuilt value, they are highly sought after in the second hand market. So whilst your initial cost may be slightly higher, you will more than recuperate this when you finally come to part with the boat.

The Linssen range is suitable for canals,

rivers and coastal and comes in sizes from 8-15m. There are a large range of designs to suit all tastes, and these include both Sedan and Aft Cabin (AC) models, there is even a hybrid powered boat.

If you would like further information on our range of new and second-hand boats please contact [Mike on MJGR@orange.fr](mailto:Mike on MJGR@orange.fr).

### Charter Management

France Afloat accepts privately owned boats into its charter fleet. This offers you an income from your boat, whilst we take on the day to day responsibility for your boat, ensuring it is well maintained, taxed, insured and promoted. We then undertake to pay you a good rate of return on your investment and offer you up to 6 weeks holiday into the bargain, and at the end of the contract you can renew, sell, or sail off into the sunset!

### Marina Services

France Afloat is unique on the French Inland Waterways; we are not only a charterer and boat sales agent, we also operate Marinas. This means that we can provide an unrivalled range of services to those looking to get Afloat in France.

Firstly we can advise you on the French inland waterways rules and regulations and boats suitable for the canals & rivers. You can then 'try before you buy' by chartering the boat of your dreams. Finally we can sell you the boat and provide you with all the necessary back up required.



For Enquiries and Booking, contact

**French Waterways**

UK +44 7590 287 178

FR +33 609 74 00 64

[www.french-waterways.com](http://www.french-waterways.com)

[info@french-waterways.com](mailto:info@french-waterways.com)